

# TECHNICAL DATA

**LIBERTY HARDWARE®**  
MANUFACTURING CORPORATION

A Masco Company

140 Business Park Drive • Winston-Salem, NC 27107  
800.542.3789 • T 336.769.4077 • F 336.769.1839  
www.libertyhardware.com

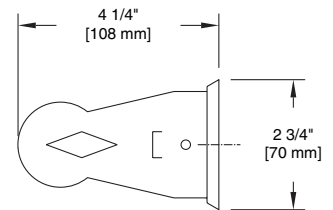
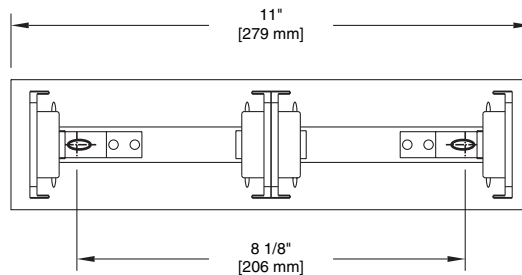
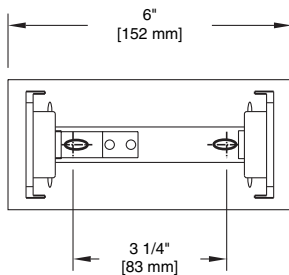
## SINGLE & DOUBLE ECONOMY TOILET PAPER HOLDER

1972 & 1973 Series

(1972)



(1973)



**MATERIALS:**

Paper holder back plate and projecting arms are fabricated of 18 gauge chrome plated steel. Roller bar is fabricated of 14 gauge chrome plated steel. Roller bar locking device catch is fabricated of 25 gauge chrome plated steel.

**CAPACITY:**

1 (single unit) or 2 (double unit) standard core rolls up to 4 1/2" diameter. Roller bar has locking device catch which releases to allow hinged projecting arm to swing back for loading paper. Locking device catch is concealed by paper until used up for pilferage resistance.

**INSTALLATION:**

1972 - Mount paper holder to wall surface through 2 holes in back plate (3 1/4" C-C) with 2- #7 x 1 1/2" panhead zinc plated steel screws provided.

1973 - Mount paper holder to wall surface through 2 holes in back plate (8 1/8" C-C) with 2- #7 x 1/12" panhead zinc plated steel screws provided. Wood blocking is preferable behind all wall surfaces. If wood blocking is not available, the following optional fasteners are suggested:

Tile/Masonry - Plastic or lead anchors  
Plaster/Drywall - Toggle bolts

**SPECIFICATION:**

Surface mounted economy paper holder shall be model \_\_\_\_\_ (fill in model number) by Liberty Hardware Manufacturing Corporation.