

TECHNICAL DATA

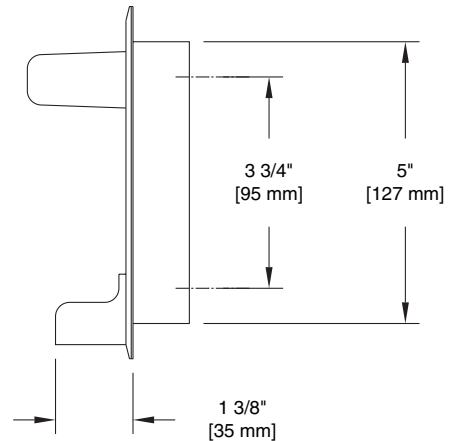
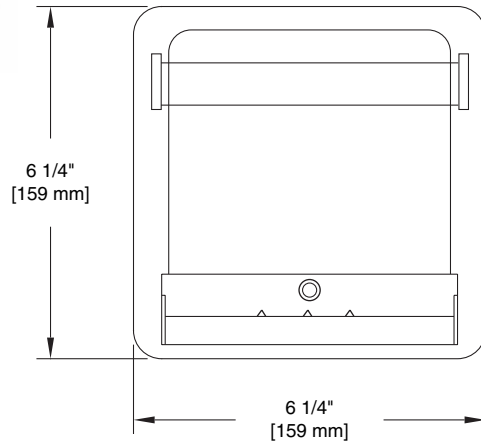
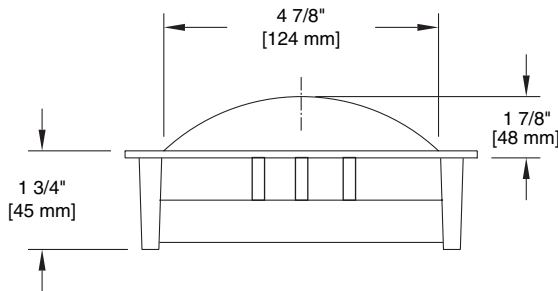
LIBERTY HARDWARE®
MANUFACTURING CORPORATION

A Masco Company

140 Business Park Drive • Winston-Salem, NC 27107
800.542.3789 • T 336.769.4077 • F 336.769.1839
www.libertyhardware.com

RECESSED SOAP DISH WITH BAR

608, 658 & 1608 Series



MATERIALS:

Chrome plated recess shells are stamped from 21 gauge (23 gauge for 1608) special alloy brass strip, highly polished, and chrome plated. Stainless steel recess shells are stamped from 22 gauge corrosion resistant type 304 stainless steel and are polished or satined. Projecting posts are die cast from highest quality virgin zinc alloy (Zamak) to meet ASTM standard B-86. Bar tubing for 658 is of 3/4" x .035 (20 gauge) round stainless steel and is polished or satined. Removable soap trays are of styrene copolymer.

INSTALLATION:

Cut out wall opening 5 1/4" x 5 1/4" x 2" depth (1 1/4" depth for 1608). If wood blocking available install recess shell into opening using 2- #8 x 1 1/4" flathead nickel or brass plated steel (stainless steel for 658) screws provided. If wood blocking is not available use optional 600R, 601R, 600BR or 601BR recess wall clamps.

SPECIFICATION:

Recess soap with bar shall be model _____ (fill in model number) by Liberty Hardware Manufacturing Corporation.